



# The consequences of Drug Abuse and Drug related crimes in China

**YES TO LIFE  
NO TO DRUG**



**The office of Beijing Narcotics Control Commission**

## Basic knowledge of Drug Abuse

According to the criminal law of the people's Republic of China, "Drugs" refers to opium, heroin, methamphetamine (meth), morphine, cannabis, cocaine, and other narcotics or psychotropic substances which can cause addiction and are regulated strictly by the state.

Generally speaking, drugs are classified into traditional drugs and synthetic drugs.

Traditional drugs, extracted from poppy and other plants, include opium, heroin, cocaine, cannabis and so on. The use of traditional drugs can cause serious harm to the body and organs, and contribute to various diseases.

Synthetic drugs are artificially synthesized, including methamphetamine, ecstasy, ketamine, "Magu" and so on. These substances can directly act on the central nervous system, causing irreversible damage to the human brain.

New psychoactive substances are gaining popularity lately in western countries. These drugs are often known as "designer drugs", as the criminals have developed ways to alter the chemical structures of the their regulated counterparts to create substances with substantially similar or even more powerful effects in excitement, hallucination and anesthesia.

Drug abuse brings countless harms and zero benefit. It not only damages the physical body tremendously, but also causes serious psychological dependence. Drug crimes, which may usually involve gangs, driving under influence and violence, are an important factor contributing to many more criminal activities and public security risks.

# 1 Traditional and synthetic drugs



## Cannabis

Cannabis is an annual herb and strictly controlled by Chinese law.

Cannabis, when used as a recreational drug, is usually rolled into a "joint". Cannabis can affect the central nervous system after use, causing temporary pleasure at first, and then slowly leading to fatigue. Heavy doses of cannabis can cause visual hallucinations, anxiety, depression, mood instability, delusions and paranoia.

People who smoke cannabis usually have the red-eye symptom due to conjunctival congestion after use. Abuse of cannabis can lead to a strong psychological dependence, while physical dependence is easier to get rid off.

## Cocaine

Cocaine is the refined extract from the leaves of coca, for which it gets name "cocaine".

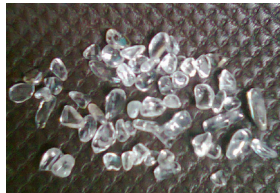
Cocaine is a stimulant that can create instant pleasure and hallucinations in various senses including vision, hearing and even touch. It is a particularly addictive drug.

After use of cocaine, paranoia will gradually start occurring and then worsening, leading to general mental decline. A heavy dose of cocaine can stimulate the spinal cord, which can lead to convulsions and even inhibit the entire nervous system, causing respiratory failure and eventually death.

## Methamphetamine

"Meth" is the short for methamphetamine, a white crystal solid resembling ice in appearance.





Long-term use of meth can lead to permanent insomnia, brain damage, heart failure and schizophrenia. Even a slightly larger dose of meth may result in fatal poisoning.

Since meth users usually have violent tendencies, and are prone to violent attacks, sexual assaults, robberies, etc., they are more often than not regarded as a threat to public security.

### Ecstasy

Ecstasy is very similar to meth in its chemical structure, and is usually mixed with various other substances such as heroin.

There are many types of ecstasy, having more than a hundred different shapes and patterns. They are mainly sold in the form of pills.

Ecstasy can excite users extremely, making them hallucinate and even end up with behavioral disorder. Ecstasy consumption is very likely to lead to schizophrenia and self-harm.

### “Magu” [Stimulant]

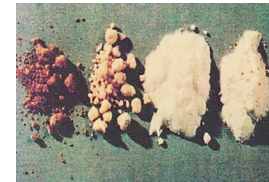
“Magu” is a Thai slang for methamphetamine pills, though usually containing caffeine in addition to the main ingredient - methamphetamine.

Magu is able to create intense excitement. Constant use can result in dependence. Long-term use may contribute to mental illnesses.

Abuse of Magu usually occurs at recreational venues. Magu is usually round-shaped. With its affordable cost, Magu can easily spread among minors.

### Morphine

Morphine is an alkaloid extracted from



opium. Taking its form as a colorless or white crystalline powder, Morphine is even more addictive than opium, and is able to cause mental disorders, paralysis and hallucinations. Excessive use of morphine may further lead to respiratory failure and consequently death.

### Heroin

Heroin, also known as “diacetylmorphine”, is a product obtained by special chemical treatment of opium. It is classified as a synthetic drug. Heroin is also at times referred to as “White Horse” or “Smack”. Some types of heroin may exude a specific smell.

Heroin is a highly addictive and powerful substance. Long-term heroin users can be extremely thin, have an empty gaze, and gradually lose innate immune functions. They are prone to complications such as hepatitis and pneumonia, which eventually lead to death.

The injectors shared by heroin users also add to the risk of transmitting HIV, hepatitis and many more communicable diseases.

### Opium

Opium is a primary drug that contains mainly morphine, codeine etc.

The earliest use of opium was for medical purposes, as a means of pain reduction and sedation, and as a cure for cough and diarrhea.

The initial symptom of an opium user is hyperactivity, followed by drowsiness later. Long-term use of opium leads to paling of the skin and major weight loss. Quitting opium can cause general discomfort such as tearing, frequent yawning, insomnia, and vomiting.



## 2 New psychoactive substances [NPS]

New psychoactive substances are gaining popularity recently among western youths. These substances are often called “designer drugs”, since the criminals have found ways to alter the chemical structure of regulated drugs to create substances with substantially similar or even more powerful effects, including excitement, hallucination and anesthesia.

Up to now, the new psychoactive substances have been spreading widely all over the globe. These substances are estimated to replace the traditional drugs and synthetic drug to become the third-generation drugs that will be widely spread in the world. According to UNODC (U.N. Office for Drug Control and Crime Prevention), 9 major categories and more than 700 individual kinds of new psychoactive substances have been detected worldwide, far exceeding the substances included in the UN's International Drug Control Conventions. Up to May 2017, the number of regulated new psychoactive substances in China has reached 134.



### Fentanyl

Fentanyl is one new type of psychoactive substances. Among these substances, carfentanyl is a typical representative of fentanyl. First synthesized by a US pharmaceutical company in the 70s, Carfentanil has the analgesic function similar to that of other opioids, with an efficacy about 1000 times that of morphine. The fatal dose of Carfentanil can be as small as merely 2mg, making it more powerful than any other fentanyl substances. A very small amount of intake can cause harm to the body and even threat to life.

### Ketamine

Ketamine can be used as a medication to initiate and maintain anesthesia. Street ketamine is usually sold in the form of white crystal powder. Abuse of ketamine can lead to unconsciousness and paralyze the central nervous system, while Ketamine overdose can easily lead to death. Ketamine is also able to stimulate sexual impulses, because of which it is often used as a “rape drug”.



### Methaqualone [Inhibitor]

Methaqualone is often referred to as “quaalude”. A small dose allows the user to elevate from a state of depression into extreme neuroticism and excitement. Long-term use of methaqualone will lead to dependence and eventually addiction. Overdose of methaqualone can cause poisoning and even lead to death from respiratory failure.



### Synthetic cannabinoids

Historically, some of the cathinones were once used as antidepressants and sedatives, but they were eventually withdrawn from clinical use due to addiction and abuse. The consumption of cathinones can lead to stimulating effects like methamphetamine and hallucination like LSD, meanwhile accompanied by reactions such as tachycardia and elevated blood pressure. Up to now, many cases have been reported concerning mental disorders, self-harm and violent attacks caused by the abuse of synthetic cannabis.



### Cassiones

Synthetic cannabis refers to a series of artificially synthesized substances with effects that are similar to those of natural cannabinoid. The consumption of synthetic cannabinoids can create an even stronger sensation than natural cannabis. This has led to the rapid spread of synthetic cannabinoids, making them the category of new psychoactive substances with the biggest number of substances and the highest rate of abuse.

### Triazolam [Inhibitor]



Triazolam, usually known as “halcion”, appear as light blue pills. Triazolam is a powerful hypnotic drug, capable of inducing hallucinations in vision, hearing and touch after consumption, usually accompanied by other symptoms such as panic attacks and behavioral disorders. It is soluble in water and various beverages, colorless and odorless. It has an immediate effect that lasts 45-100 times longer than ordinary sedatives. Because of this, triazolam is often used by criminals as an aid in crimes such as robbery and rape.



### 3 About the disguised drugs

Besides the usual drugs mentioned above, a variety of “drugs in disguise” have recently emerged in the market. It is strongly advised that you should not take food from strangers, and say no to snacks and beverages from questionable sources, so as to avoid the traps set by drug criminals.

#### Khat



Khat is commonly referred to as “Arabian Tea”. It has a low cost and leaves that contain the excitatory substance cathinone, which has a stimulating effect on the central nervous system. Khat’s effect is similar to that of heroin. It is often consumed through chewing. Long-term use can lead to addiction. With its innocent appearance, it can easily be mistaken for green tea or vegetable.

#### “Milk-tea”



“Milk-tea” is a powdery substance, usually disguised as packaged milk-tea, instant coffee or instant tea. It resembles typical instant drink mix powder and exudes an innocent smell of milk-tea, while in fact it is a mixture of meth and ketamine, making “milk-tea” an extremely addictive and powerful drug.

#### Cough Syrup



The main ingredient of “cough syrup” is codeine phosphate. It is a prescription drug. Taking it according to advice by medical professionals will not present any health issue. However, abusing it in an uncontrolled manner may lead to addiction and harm to physical health.

#### The Red Meth



Resembling purple crystal or grainy salt, the red meth is the purified version of the usual methamphetamine, with an effect that is 2-3 times more intense. First use can already lead to serious addiction.

#### “Pop Rocks”



“Pop Rocks” refers to the new type of drug that is disguised as the Pop Rocks Candy. It is soluble in water and able to mix with various beverages without changing the flavor and smell. “Pop Rocks” has a long lasting effect. Having one beverage mixed with this substance can lead to hyperactivity for as long as two days.

#### “Bath Salt”



“Bath Salt” refers to the highly purified crystal from the psychotic drug cathinone, and is a powerful hallucinogen. It is available in various tempting colors. Once the users take the “Bath Salt”, they may develop the delusion of being an invulnerable giant and become a threat to public security.

#### “Laughing Gas”



Nitrous oxide is not listed as a drug for the time being, but it does great harm. Nitrous Oxide, commonly known as the “laughing gas”, is a sweet-smelling and colorless gas, which serves as a sedative and means of anesthesia in medical practices. It is clinically used in strict and precise portions, mainly during dental surgeries. Nitrous oxide is a hazardous chemical and strictly regulated. Inhaling it can cause a short period of excitement and light pleasure. Those who inhale it can start to laugh as an effect, which gives it the name “laughing gas”.

Abusing “laughing gas” can bring tremendous harm to the central nervous system, and damage the internal organs, nerves and the body. It can also cause death in extreme cases.



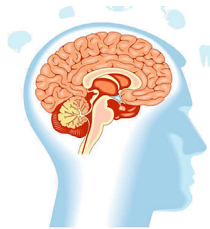
## 4 The physical and psychological harm caused by the drugs

Drug abuse can lead to poisoning, organ dysfunction and pathological changes. Drug overdose can even directly result in death. The life expectancy of drug users is 10-15 years shorter than that of the average population.



### ◆ Brain

Drug abuse can lead to immense and irreversible damage to the central nervous system. The most common consequences are brain abscesses and cerebral embolism, which can develop to a serious stage within just a few seconds, and further lead to aphasia, physical paralysis, and eventual death. As shown in the animal experiments, when heroin was injected into the mice for 7 consecutive days, their brain tissues became seriously damaged; when heroin was injected into the mice for 9 consecutive days, a large number of their brain cells died as a result. New drugs (synthetic drugs, such as meth) are able to bring even more irreversible damages to the brain and nervous system. Drug users experience hallucinations and delusions, which can easily contribute to schizophrenia later.



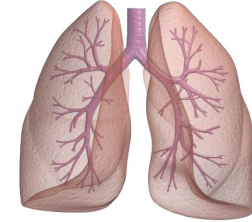
### ◆ Heart

Drug abuse can induce cardiovascular damages, leading to myocardial ischemia, myocardial infarction, myocarditis, infective endocarditis and so on. 50%-55% of heroin users have abnormal ECG results. Excessive use of new drugs can cause excessive expansion of the heart, resulting in the ripping of heart muscle tissues and death, which occurs very frequently among drug users.



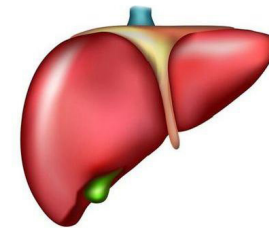
### ◆ Lungs

Using drugs such as heroin and cocaine can easily result in respiratory diseases such as bronchitis and tuberculosis. When drugs are inhaled, the mixture of the substances and nicotine is deposited in the respiratory organs. When the drugs are injected, the substances and impurities can stick inside the capillaries in the lungs, which can seriously affect the gas exchange and lead to pulmonary embolism. Heroin overdose can induce noncardiogenic pulmonary edema, which can further result in death in severe cases.



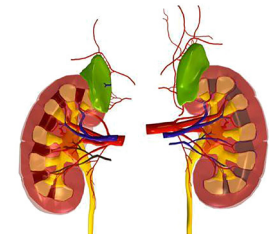
### ◆ Liver

Drug abuse has a directly negative effect on the liver. Drugs and the harmful impurities need to be broken down and processed by the liver, resulting in the reduction and even complete failure of the liver's detoxification function, thereby aggravating drugs' toxic effect on the body. Common liver diseases caused by drug abuse are acute or chronic hepatitis, or in more severe cases, cirrhosis and liver failure that can both be fatal. Since drug users often share unclean needles and syringes to inject substances, it directly increases the chance of the infection with these contagious liver diseases, especially when 60% of the drug users are infected with either hepatitis b or hepatitis c.



### ◆ kidneys

The substances and the Impurities enter the human body through the blood current, and eventually form compounds that will stay inside the kidney tissues, leading to kidney dysfunction and kidney abscess. If the tool for taking drugs is unclean, it can easily lead to acute nephrotic syndrome within about two months.



# The Chinese laws against drug abuse and drug related crimes

**Penalties:** Depending on the quantity of the illegally possessed substances, an offender may be sentenced to imprisonment under 3 years, criminal detention or public surveillance, as well as to imprisonment for over 7 years or life imprisonment. A fine will be charged.

**Possessing Drugs**

**Selling Drugs**

**Penalties** Criminal charges should be pursued and criminal punishments should be imposed, regardless of the quantity of substance involved: according to the quantity of the substance involved, possible penalty for the offender may vary from imprisonment for under three years, criminal detention, and public surveillance, to life imprisonment and death penalty. In addition, there will also be a fine or confiscation of personal property.

**Manufacturing Drugs**

**Trafficking Drugs**

**Penalties:** In accordance with the seriousness of each case, the penalty for the offender varies from imprisonment for under 3 years or criminal detention, to imprisonment for 3 to 10 years. An additional fine will also be charged.

## 1 laws, regulations and penalties

**Penalties:** In accordance with the seriousness of each case, an offender may be sentenced to detention under 5 days, imprisonment for not more than 3 years, criminal detention or public surveillance. A fine of 500-3000RMB will be charged.

**Connecting Buyers and Dealers**

### Hazards and consequences of drug use

\*If one of the following behaviors occurs and constitutes a crime, the offender shall be prosecuted for criminal liability according to law; if the behavior does not constitute a crime, penalties will be given in accordance with the Regulations of PRC on Administrative Penalties for Public Security.

\*In addition to the legal responsibilities, the offender may be expelled, deported and denied entry for a 5-year period.

**Spreading Drug Manufacturing Techniques**

**Penalties:** In accordance with the seriousness of each case, the penalty for the offender varies from imprisonment for under 3 years, criminal detention or public surveillance, to imprisonment for 3 to 10 years. An additional fine will also be charged.

**Penalties:** If the quantity is large, the offender shall be sentenced to imprisonment of not more than three years, criminal detention or public surveillance. A fine may also be charged as a penalty.

**Buying, selling, transporting, carrying, or possessing seeds or seedlings of drug-related plants**

**Providing Drugs**

**Penalties:** In accordance with the seriousness of each case, an offender may be sentenced to detention under 5 days, imprisonment for not more than 3 years, criminal detention or public surveillance. A fine of 500-3000RMB will be charged.

**Providing a venue for drug users**

**Forcing, tempting, instigating, deceiving others to take and inject drugs**

**Penalties:** In accordance with the seriousness of each case, the penalty for the offender varies from imprisonment for under 3 years, criminal detention or public surveillance, to imprisonment up to 7 years. An additional fine will also be charged.

**Penalties:** Criminal charges should be pursued and criminal punishments should be imposed, regardless of the quantity of substance involved: according to the quantity of the substance involved, possible penalty for the offender may vary from imprisonment for not more than three years, criminal detention, and public surveillance, to life imprisonment and death penalty. In addition, there will also be a fine or confiscation of personal property.

**Smuggling drugs**

**Keeping Drug-related Plants**

**Penalties:** All involved plants will be eradicated. In accordance with the quantity of the illegal plants, the penalty for the offender may vary from fixed-term imprisonment, criminal detention or public surveillance. An additional fine will be charged. An offender who voluntarily eradicates the plants before harvesting shall be exempted from the penalty.

It is illegal to take drugs in China. Foreigners (international students) who have committed illegal acts will be given a time limit for departure or even deportation, and may not be allowed to enter after that.

**Drug abuse**



## 2 Report the law offending and drug-related criminal activities

\*If you find anyone participating in criminal activities including using and selling drugs, please make sure you are safe and immediately dial “110” to report to the local police.

\*According to the Anti-drug Law of People's Republic of China, the state encourages citizens to report drug-related crimes. The people's governments at all levels and relevant departments are obligated protect the informants. Honors and rewards shall be given to those who report useful information, as well as to individuals and organizations that have made outstanding contributions to anti-drug work.

**If you notice any suspicious behavior, please**

**call  
110**



### Ways to report:

1. Telephone number: 110 or 01083552012;
2. Email address : p-jdzd@bjgaj.gov.cn;
3. Mailing address: Narcotics Control Department Beijing Public Security Bureau, Peixinjiejia 5, Dongcheng District, Beijing, Postal code: 100061;
4. Report by contacting @ 平安北京 on Weibo or “北京禁毒” on WeChat subscription;
5. Report directly to the police.

## Drug-Free Commitment (Sample)

During my study in China, I am willing to adhere to the following commitments:

1. I will strictly obey the laws and legislations of People's Republic of China, abide by the regulations of the university and support the work of the administration at my university.

2. I will read this pamphlet, learn about the harm and consequences of drug abuse and drug-related crimes.

3. I will not abuse any drugs that are regulated by the laws of China and will not commit any drug-related crimes.

4. I am willing to take part in drug-control publicity and become an anti-drug volunteer, who will encourage other international students to stay away from drug abuse and drug-related crimes.

5. I will be vigilant and report any drug-related crimes.

6. I will personally take all responsibilities and consequences that may be caused by my drug-related activities during my study in China.

Signature:

Date:

